

# SCOTTSDALE AIRPARK CORPORATE CENTER OFFICE SUITE FOR LEASE

## FIRST FLOOR LOBBY SUITE 100 ±2,879 SF

### 15150 N HAYDEN ROAD • SCOTTSDALE, AZ 85260



## SCOTTSDALE AIRPARK CORPORATE CENTER

RECENTLY RENOVATED COMMON AREAS • CONTEMPORARY FINISHES FOR AN OPTIMAL WORKPLACE ENVIRONMENT

*For more information or to schedule a tour please contact*



**John Quatrini**  
Associate Broker  
C 602.859.0506  
john@shellcommercial.com



**Suzanne Enright**  
Senior Associate  
C 602.471.2981  
suzanne@shellcommercial.com



**SHELL**  
*Commercial Investment Real Estate*  
O 480 443 3992 16410 N 91st St  
Suite 112 Scottsdale, AZ 85260

The above is subject to prior sales and leasing. This information has been secured from sources we believe to be reliable, but we make no representation or warranties, expressed or implied as to the accuracy of this information.

**SIZE/DESCRIPTION:** • ±2,879 SF FIRST FLOOR LOBBY ACCESS

**BUILDOUT INCLUDES:** • RECEPTION WITH BUILT-IN DESK

• CONFERENCE ROOM

• FOUR (4) OFFICES

• LARGE OPEN FLEX SPACE

• BREAK ROOM

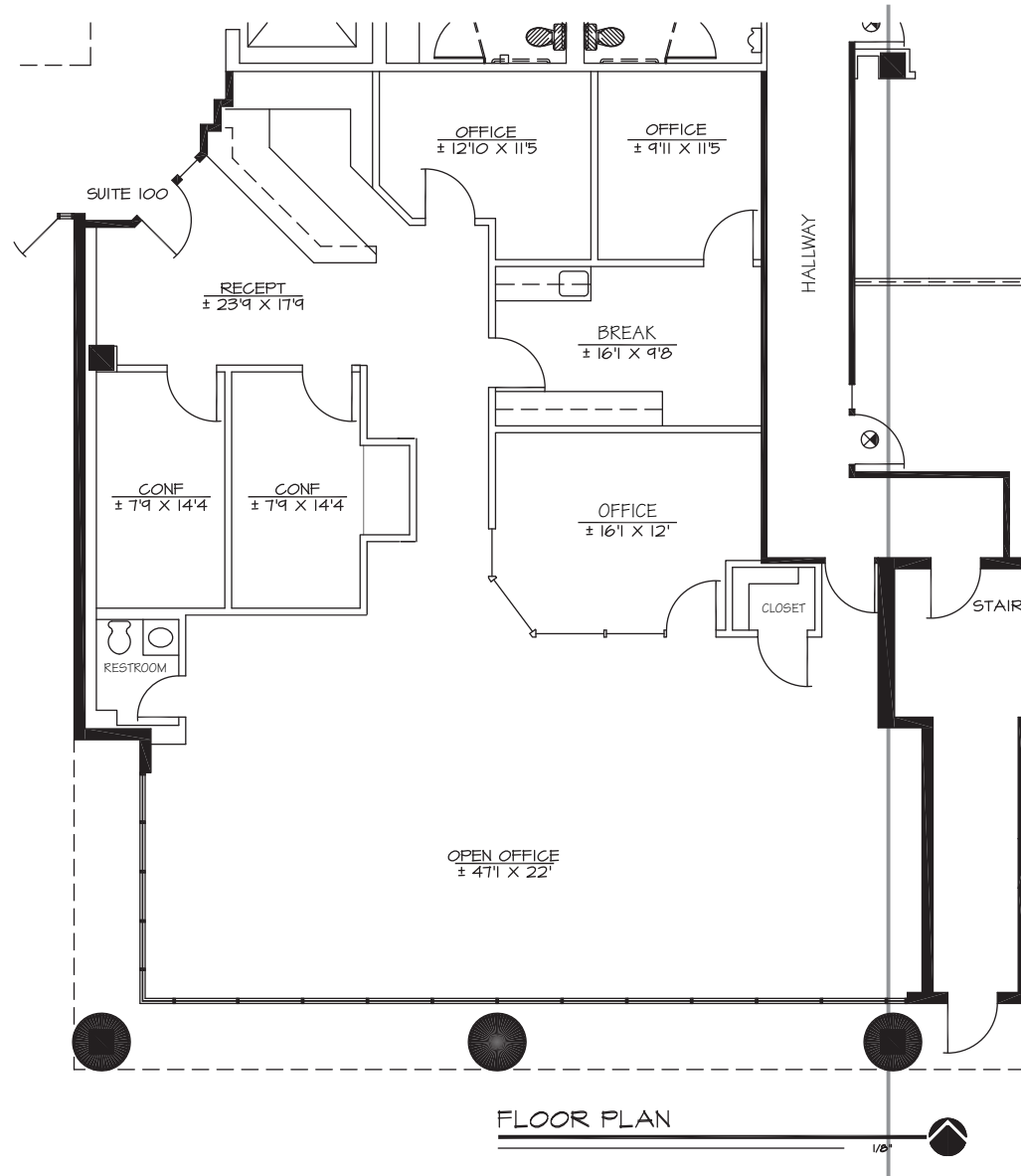
• RESTROOM

**PARKING RATIO:** • 4/1,000

**ZONING:** • I-1 CITY OF SCOTTSDALE

**±2,879 SF**

**15150 N HAYDEN ROAD • SCOTTSDALE, AZ 85260**



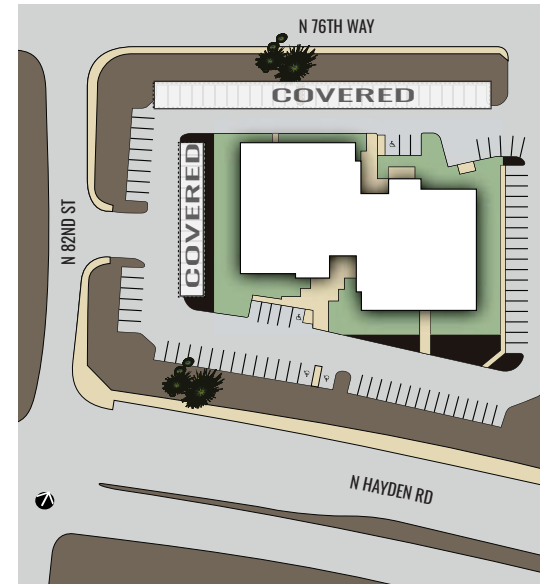
**NOT TO SCALE**

All information furnished regarding property for sale, rental or financing is from sources deemed reliable, but no warranty or representation is made to the accuracy thereof and same is submitted to errors, omissions, change of price, rental or other conditions, prior to sale, lease or financing or withdrawal without notice. No liability of any kind is to be imposed on the broker herein. This information has been secured from sources deemed reliable, however, we make no warranties as to its accuracy.

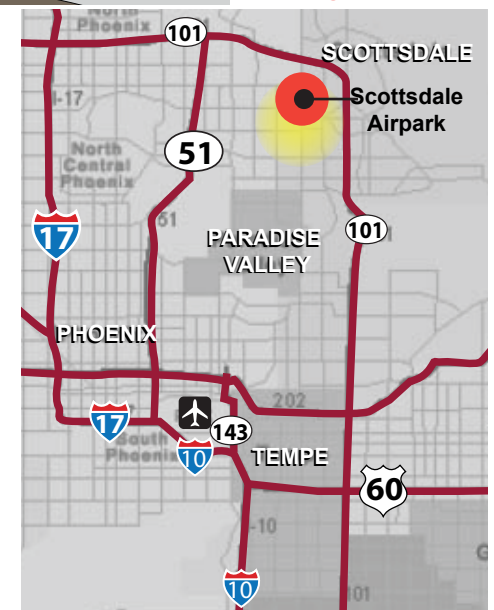
## OUTSTANDING FEATURES FOR A MODERN & PLEASANT WORK ENVIRONMENT



**SITE PLAN**



**MAP OVERVIEW**



- Spacious welcoming lobby with open staircase
- Open concept layout with plenty of natural lighting
- Exposed ductwork for a contemporary feel
- Architectural appeal with a variety of class 'A' finishes throughout
- Covered parking available
- Close proximity to Scottsdale Airpark's popular shopping and dining destinations

# SCOTTSDALE AIRPARK CORPORATE CENTER

## HIGHLIGHTS / AMENITIES

15150 N HAYDEN ROAD • SCOTTSDALE, AZ 85260

Parking ratio:  
4.0/1000 per RSF



11 Golf courses  
within 5 mile radius



Over 100 restaurants  
within 5 minute drive



MASTRO'S OCEAN CLUB  
CAPITAL GRILLE  
DOMINICK'S STEAKHOUSE  
NORTH ITALIA  
THE VIG  
BENIHANA  
GRIMALDI'S PIZZERIA  
ZINC BISTRO  
OHSO BREWERY

MAGGIANO'S LITTLE ITALY  
BUFFALO WILD WINGS  
ZINBURGER  
SNOOZE A.M. EATERY  
TRUE FOOD  
CAFE RIO  
N-N-OUT BURGER  
CHIPOTLE  
HABIT BURGER

Scottsdale Municipal  
Airport - 5 minute drive



7 Resort hotels  
within 5 minute drive



## CLOSE PROXIMITY TO NORTH SCOTTSDALE'S FINEST SHOPPING AND DINING DESTINATIONS

